

CRUCETAS DE CARDAN

CÓDIGO	FIG.	APLICACIÓN	DADO(A)	CRUZ (B)	STAHL	SPICER	PRECIO
MERCEDES BENZ							
CR 1004	1	710 - 709 - SPRINTER	30,1	106,2	CZ 210	5-160 X	\$ 24,05
CR 1005	1	814 - 912	34,9	106,2	CZ 254	5-263 X	\$ 29,99
CR 1006	1	OA 101 / 814	34,9	126,1	CZ 256	5-275 X	\$ 33,74
CR 1007	4	1218/ L1620/ OHL 1621	47,6	134,9	CZ 264	5-438 X	\$ 76,43
CR 1008	3	O-400RS/O - O-400RSD/OH1636L	49,2	191,8	CZ 270	5-281 X	\$ 103,74
CR 1010	1	O-370RS/ O-400UR	48	160,9	CZ 265	5-12062 X	\$ 103,74
CR 1011	4	SERIE 1700 / 10 (REEMPLAZO 1015)	49,2	154,7		5-515x/280X	\$ 79,75
CR 1013	1	LS1634/ LS 1938	60	163	CZ 232	SPL250-1X	\$ 185,75
CR 1016	4	O400 RS/ O400 RSO	49,2	191,8	CZ 272	5-510 X	\$ 107,07
CR 1301	2	1114 - OH 1315	38	57,1	CZ 227	5-12213 X	\$ 33,68
CR 1302	1	L 1521/ OH 1419	45	120,3	CZ 228	5-12100 X	\$ 77,88
CR 1303		(CR 1017) L 1218 / 1620	41,2	126	CZ 271	SPL 90-1 X	\$ 57,90
CR 1304	1	O 370/ 371	48	125,6	CZ 279	5- 12219 X	\$ 68,77
CR 1306	1	O 370 / 371 / 400	52,1	132,9	CZ 230	5-12924 X	\$ 109,26
CR 1307	1	1633 / 1938	57	152,1	CZ 231	5-12932 X	\$ 142,04
CR 1308	2	1935 97....	68	89	CZ 276		\$ 360,56
CR 1310	1	2423B / 2423K	53	135		SPL140X	\$ 96,14
SCANIA							
CR 1008	3	112 / 113	49,2	191,8	CZ 270	5-281 X	\$ 103,74
CR 1009	1	111/ 12/ 40/ 41/ 42	50	164	CZ 255	5-12278 X	\$ 109,26
CR 1010	1	112 / 113	48	160,9	CZ 265	5- 12062 X	\$ 103,74
CR 1401	1	LS 110/ 11/ - B110 -BR 115	44	149	CZ 251	5-12276 X	\$ 87,35
VOLVO							
CR 1001	1	B10M B58	27	81,7		5-153X	\$17,46
CR 1008	3	N/NL 10/ 12/ B10R	49,2	191,8	CZ 270	5-281 X	\$103,74
CR 1009	1	N10/N12/B58/B10M/B10R/B12B/B7R	50	164	CZ 255	5-12278 X	\$109,26
CR 1010	1	N10/N12/NL10/NL12	48	160,9	CZ 265	5-12062 X	\$103,74
CR 1013	1	FH12/FM10/FM12/NH12	60	163	CZ 236	SPL250-1X	\$185,75
CR 1016	4	B10R/B7R	49,2	191,8	CZ 272	5-510 X	\$107,07
FORD							
CR 1001	1	AGRICOLA/F100/ F350/ F1000/ JEEP	27	81,7		5-153X	\$17,46
CR 1004	1	AGRÍCOLA/ F600/ F4000/ 4.3TURBO/F11000	30,1	106,2	CZ 210	5-160 X	\$24,05
CR 1005	1	F750/ 7000/ 11000 A 22000	34,9	106,2	CZ 254	5-263 X	\$29,99
CR 1006	1	CARGO 1114/1215/1314/1415/1514/1516	34,9	126,1	CZ 256	5-275 X	\$33,74
CR 1007	4	CARGO TURBO 1618/2218/1422/1622/2322	47,6	134,9	CZ 264	5-438 X	\$76,43
CR 1011	4	CARGO 1521/ 1621/ 2321/ 2425	49,2	154,7		5-515x/280X	\$79,75
CR 1016	4	CARGO 4030	49,2	191,8	CZ 272	5-510 X	\$107,07
CR 1101	3	CARGO 1521/1621/24/30-2321/24/2422/25	23,8	61,2		5-111X	\$14,19
VOLKSWAGEN							
CR 1001	1	D400/ COMBI CLIPER	27	81,7		5-153X	\$17,46
CR 1004	1	6-80/6-90/6-140/7-90S	30,1	106,2	CZ 210	5-160 X	\$24,05
CR 1005	1	11-1130/ E-13/ 11-140/ 14-140/ 8-140/ 9-140	34,9	106,2	CZ 254	5-263 X	\$29,99
CR 1006	1	14-170/ 16-170/ 22-160/ 22-140/ 14-150	34,9	126,1	CZ 256	5-275 X	\$33,74
CR 1007	4	14-200/10 15-210/ 16-210/ 17-220/ 22-210	47,6	134,9	CZ 264	5-438 X	\$76,43
CR 1011	4	16.300/ 17.300/ 23.220/ 24.250/ 26.300	49,2	154,7		5-515x/280X	\$79,75
CR 1303		(CR 1017) L 1218 / 1620	41,2	126	CZ 271	SPL 90-1 X	\$57,90
MOVIMIENTO DE CAJA DE CAMBIO (M.BENZ)							
CÓDIGO	FIG.	APLICACIÓN	A	B	C	STAHL	PRECIO
JT 1874	4	OMNIBUS MOTOR TRASERO 71...	60/4 F	60/4 F	65 m/m	JU-813	\$ 38,35
JT 1880		OMNIBUS MOTOR TRASERO 71...				JU-814	\$ 54,63
MOVIMIENTO DE DIRECCIÓN (M. BENZ)							
JT 1875	5	OMNIBUS / CAMION 10/72...	25,8/79E	25,8/79E	100 m/m	JU-866	\$ 39,03
JT 1876		L-709/10/12 - 912/14 L0814/1114/812/809				JU-840	\$ 43,43
JT 1877		MB 1620 / 1621				JU-946	\$ 43,70
JT 1882		CAMIONES Y OMNIBUS 72...				JU-887	\$ 76,49
MOVIMIENTO DE CAJA DE CAMBIO (SCANIA)							
JT 1881		OMNIBUS MOTOR TRASERO 72...				JU-818	\$ 54,28
MOVIMIENTO DE DIRECCIÓN (SCANIA)							
JT 1879		OMNIBUS MOTOR TRASERO 72...		Nº ORIGINAL 250.296		JU-817	\$ 67,70

FIG. 1

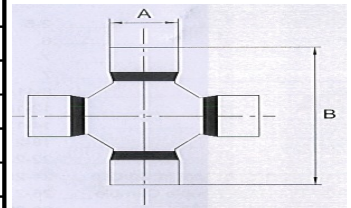


FIG. 2

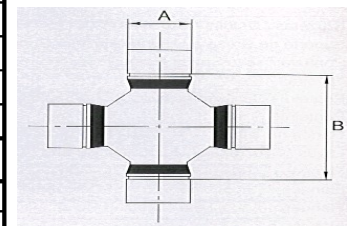


FIG. 3

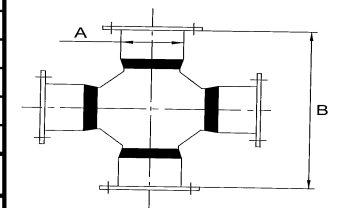


FIG. 4

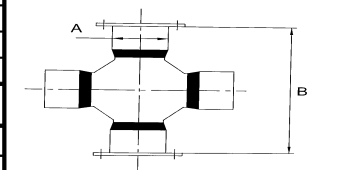


FIG. 4

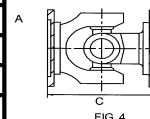
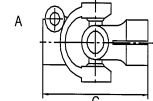
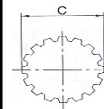
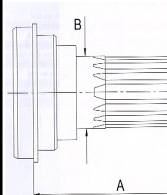


FIG. 5



PUNTAS ESTRIADAS PARA SOLDAR

SCANIA							
CÓDIGO	APLICACIÓN	TUBO	A	B	Xn°Dt.	N° COMP.	PRECIO
PT 1431	R/T 112 -142 T113 L110/111-LS110	89 X 5	147	55	55 X 22	54 - 435	\$ 121,63
PT 1432	113H/124 98 EM DIANTE/ P400	4"x13/64"	149	60	60 X 24		\$ 144,08



MERCEDES BENZ							
PT 1025	1218 - 1620 - OHL1621	4"	111	45	45 X 34	90-53-11	\$ 111,22
PT 1032	L709- 710- 809- 812- 912	3 1/2"	102	40	38 X 10	3-53-1821	\$ 81,42
PT 1332	1114 / OH 1315	70MM	142	40	40 X 14	54-442C	\$ 74,35
PT 1334	L/LS/LK1519-2219	90MM	152	55	55 X 26	54-556C	\$ 109,48

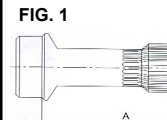
FORD							
PT 1025	CB-1419/1619/2221/2319/	4"	111	45	45 X 34	90-53-11	\$ 111,22
PT 1032	F11000 a 21000- F700-F750-F7000	3 1/2"	102	40	38 X 10	3-53-1821	\$ 81,42

IVECO							
PT 1025	EUROCARGO 150E 20N/ 160 E23N	4"	111	45	45 X 34	90-53-11	\$ 111,22

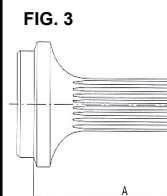
VOLKSWAGEN							
PT 1025	14-200 16-180/200 17-210/220	4"	111	45	45 X 34	90-53-11	\$ 111,22

MACHO DE CARDAN

SCANIA							
CÓDIGO	APLICACIÓN	FIG.	TUBO	A	Cxn°Dtes	N° COMP.	PRECIO
PT 1033	R112 - T112 - T113	1		293	76.2 x 16	8-40-101	
PT 1420	R/T112 - R142- K112-F112	1	3 1/2"	239	50 X 16	40-1722	\$ 207,73
PT 1421	R/T 112 -142 T113 L110/1/3 LS110	1	4"	261	62 X 12	40 - 1723	\$ 197,74
PT 1938	PARA CRUCETA CR 1010				16 ESTRIAS		\$ 197,64

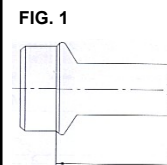


MERCEDES BENZ							
PT 1020	814 / 914 - DEUTZ	1	3 1/2"	173	44 X 16	4-40-761	\$ 75,86
PT 1022	OHL 1621 (384.410.0208)	1	4"	255	50 X 16	5-40-1051	\$ 180,80
PT 1026	SPRINTER (690.411.0002)		3 1/2"	193	40 X 16	53 - 1443	\$ 85,75
PT 1028	814 / 912 (Reem. PT1329)	1	3 1/2"	171	40 X 16	3-40-1571	\$ 82,27
PT 1031	L720 / 1620 (384.411.0002)	1	4"	257	49 X 30	90-40-11	\$ 129,51
PT 1326	1114 (358.411.0002)	3	70MM	227	50 X 16	40-1445	\$ 89,94
PT 1327	OH 1315 (345.411.0002)	3	70MM	279	50 X 16		\$ 126,64
PT 1328	OHL / 1420 (355.411.0002)	3	90MM	276	63 X 16	40-1560	\$ 192,53



FORD							
PT 1020	FORD CARGO	1	3 1/2"	173	44 X 16	4-40-761	\$ 75,86
PT 1022	FORD CARGO	1	4"	255	50 X 16	5-40-1051	\$ 180,80
PT 1028	F 22000	1	3 1/2"	171	40 X 16	3-40-1571	\$ 82,27

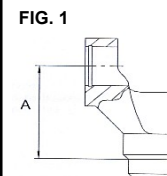
VOLKSWAGEN							
PT 1020	14-200/10 16-180/200 17-210/20	1	3 1/2"	173	44 X 16	4-40-761	\$ 75,86
PT 1022	14-210 14-150 22-160	1	4"	255	50 X 16	5-40-1051	\$ 180,80
PT 1026	6-80/ 140 7-90S		3 1/2"	193	40 X 16	53 - 1443	\$ 85,75
PT 1028	11-130 12-140H D1400	1	3 1/2"	171	40 X 16	3-40-1571	\$ 82,27
PT 1031	16-200 17-210	1	4"	257	49 X 30	90-40-11	\$ 129,51



IVECO							
PT 1020	EUROCARGO 120E 15N	1	3 1/2"	173	44 X 16	4-40-761	\$ 75,86
PT 1022	EUROCARGO 150E 20N/T 160E 23N	1	4"	255	50 X 16	5-40-1051	\$ 180,80

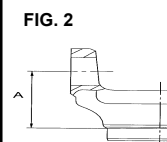
HORQUILLAS PARA SOLDAR

SCANIA							
CÓDIGO	FIG.	APLICACIÓN	CRUCETA	A	TUBO	N° COMP.	PRECIO
GR 1431	1	K/R/T 112/113 R/T142 L113 KT112	CR1009	86	95 X 5	26 - 163	\$ 130,79
GR 1432	1	113 P/R/T 114/ 124/ P400	CR1010	95	4" x 13/64"	26 - 246	\$ 145,25
GR 1434	1	P/R/T 114-124 R/T 113 P500	CR1402	93			\$ 174,34



DEUTZ							
GR 1035	1	DEUTZ	CR 1006	55	3 1/2"	4 - 28 - 307	\$ 67,48

MERCEDES BENZ							
GR 1033	1	814 - 912	CR 1005	51	3 1/2"	3-28-537	\$52,49
GR 1036	2	L 1218/ 1718/ 1620/ 1621	CR 1007	76	4"	5-28-327	\$107,76
GR 1037	1	SPRINTER	CR 1004	55	3 1/2"	3-28-557	\$52,49
GR 1038	1	L1620 /1720	CR 1017	76	4"	90-28-27	\$107,76
GR 1337	3	1114 - OH 1315 (341.411.0205)	CR 1301	65	70MM	26-118	\$57,75
GR 1339	1	OHL 1420 (336.411.0105)	CR 1302	99	90MM	26-227	\$112,90



FORD										
GR 1033	1	F 7000/ 750	CR 1005	51	3 1/2"	3-28-537	\$52,49			
GR 1035	1	F12000-14000/22000- 1517- 1615	CR 1006	55	3 1/2"	4-28-307	\$67,49			
GR 1036	2	FORD CARGO 1419/ 22 - 2322	CR 1007	76	4"	5-28-327	\$107,76			
GR 1037	1	F600 - 11000- 21000	CR 1004	55	3 1/2"	3-28-557	\$52,49			
VOLKSWAGEN										
GR 1033	1	11-130/60 13-130 D-950 7-110S 14-140	CR 1005	51	3 1/2"	3-28-537	\$52,49			
GR 1035	1	12-140/170TB/ 16-170/22-160/140	CR 1006	55	3 1/2"	4-28-307	\$67,49			
GR 1036	2	14-210/ 16-210/ 15-210/ 22-210/ 24-210	CR 1007	76	4"	5-28-327	\$107,76			
GR 1037	1	6-80 / 90 / 140 7-90S	CR 1004	55	3 1/2"	3-28-557	\$52,49			
IVECO										
GR 1035	1	EUROCARGO 120 E 15N	CR 1006	55	3 1/2"	4-28-307	\$67,49			
GR 1036	2	EUROCARGO 150E 20N /20T 160E 23N	CR 1007	76	4"	5-28-327	\$107,76			
DEUTZ										
GR 1035	1	DEUTZ	CR 1006	55	3 1/2"	4-28-307	\$67,49			
PLATO PORTA CRUCETA										
SCANIA										
CÓDIGO	FIG.	APLICACIÓN	CRUCETA	A	B	C	ØD	ØE	AGU.	PRECIO
AT 1057	3	R/T 112- T113	CR 1008		184	86	196,8	203,2	12	\$123,94
MERCEDES BENZ										
AT 1349	3	LP321/ L-1111/ O-321	CR 1301		102	61	82,56	120	6	\$45,31
AT 1350	3	L 608/ 1114 / OH	CR 1301		112	61	82,56	130	8	\$50,26
AT 1352	2	OHL 1420 (336.411.0011)	CR 1302		130	74	90	150	8	\$83,50
HEMBRA DE CARDAN										
SCANIA										
CÓDIGO	FIG.	APLICACIÓN	CRUCETA	A	Ø x n° Dt.	N° COMP.	PRECIO			
LV 1450	1	R112/142-T112-K112-	CR 1401	238	50 X 16	03-334XL	\$ 197,74			
LV 1451	1	L110/1/3-R/T112/142-T113	CR 1009	266	62 X 12	03-541XL	\$ 230,74			
LV 1065	1	P-40	CR 1010	268	63 X 16	03-466KX	\$ 240,25			
LV 1952		16 ESTRIAS CON DTRO. 63.5	CR 1010				\$ 244,25			
MERCEDES BENZ										
LV 1045	3	0400RS/ RSO/ 0-400RSE/ OH1636L	CR 1008	301	76.2 X 16	6.5-3-1371KX	\$ 290,07			
LV 1050	1	814 / DEUTZ	CR 1006	176	44 X 16	4-3-1241KX	\$ 91,31			
LV 1060	3	1718 -1218 - OHL1621 (384.410.0008)	CR 1007	274	50 X 16	5-3-2261KX	\$ 203,66			
LV 1061	1	SPRINTER	CR 1004	143	38 X 16	3-3-2041KX	\$ 78,69			
LV 1062	1	L709/ L710 (N° ANTIGUO LV1346)	CR 1004	165	38 X 16	3-3-118KX	\$ 83,12			
LV 1063	1	L1621/ OH1420/21- OF1417- L1620/	CR 1017	256	49 X 30	90-3-21X	\$ 177,34			
LV 1064	3	O 400	CR 1011	297	63 X 16	6-3-2651KX	\$ 196,67			
LV 1343	2	1114/ L608	CR 1301	212	50 X 16	03-339XS	\$ 108,67			
LV 1344	2	OH 1315	CR 1301	267	50 X 16		\$ 185,97			
LV 1345	1	OHL 1420	CR 1302	270	63 X 16	03-423XS	\$ 187,03			
FORD										
LV 1050	1	F-22000	CR 1006	176	44 X 16	4-3-1241KX	\$ 91,31			
LV 1060	3	CARGO 1618/ 22 - 2218	CR 1007	274	50 X 16	5-3-2261KX	\$ 203,66			
LV 1062	1	F 1000 TURBO (N° ANTIGUO LV 1346)	CR 1004	165	38 X 16	3-3-118KX	\$ 83,12			
LV 1064	3	CARGO 1621 - 2321	CR 1011	297	63 X 16	6-3-2651KX	\$ 196,67			
VOLKSWAGEN										
LV 1050	1	12-140/ 12-170/ 13-150/ 14-150/ 14-170/	CR 1006	176	44 X 16	4-3-1241KX	\$ 91,31			
LV 1060	3	14-200/10 16-210/20 15-210 22-210	CR 1007	274	50 X 16	5-3-2261KX	\$ 203,66			
LV 1061	1	SPRINTER	CR 1004	143	38 X 16	3-3-2041KX	\$ 78,69			
LV 1063	1	16-200 17-210 (N° ANTIGUO LV1347)	CR 1017	256	49 X 30	90-3-21X	\$ 177,34			
LV 1064	3	16-300 17-300 23-220 24-220/50	CR 1011	297	63 X 16	6-3-2651KX	\$ 196,67			
IVECO										
LV 1050	1	EUROCARGO 120E 15N	CR 1006	176	44 X 16	4-3-1241KX	\$ 91,31			
LV 1060	3	EUROCARGO 150 E 20T 160 E 23N	CR 1007	274	50 X 16	5-3-2261KX	\$ 203,66			
GENERAL MOTORS										
LV 1250	1	D-C-64/5/8 D-70/74/78	CR 1004	145	35 X 16	3-3-1481KX	\$ 65,71			
LV 1050	1	A/C65/68/74/78/85/88 A/C95 A 98/ D64	CR 1006	176	44 X 16	4-3-1241KX	\$ 91,31			
LV 1060	3	C-64/65/68 D-64/65/68/70/74/78	CR 1007	274	50 X 16	5-3-2261KX	\$ 203,66			
LV 1062	1	D20 (N° ANTIGUO LV 1346)	CR 1004	165	38 X 16	3-3-118KX	\$ 83,12			

FIG. 3

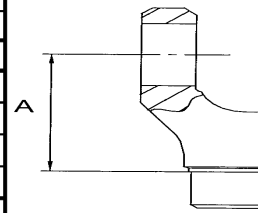


FIG. 2

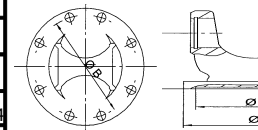


FIG. 3

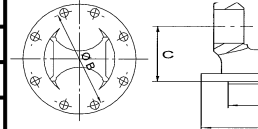


FIG. 1

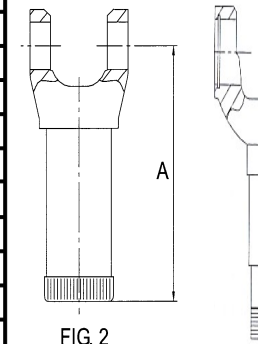


FIG. 2

FIG. 1

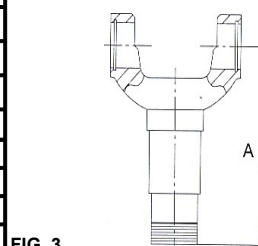
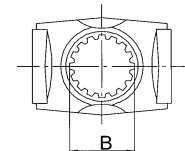
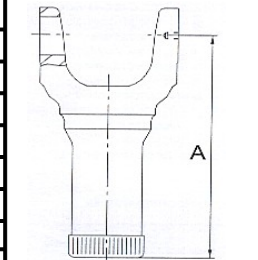


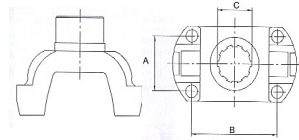
FIG. 3



BRIDA DE CARDAN

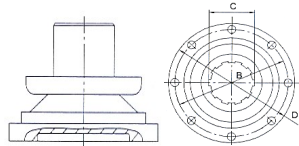
SCANIA							
FIG.	APLICACIÓN	CRUCETA	A	B	CxN°DTES.	AGU.	
1	T112 (84...) L-K-140/141 R-T142	CR 1009	68	132	55 X 22	4 (RM)	

FIG. 1



MERCEDES BENZ							
FIG.	APLICACIÓN	CRUCETA	A	B	CxN°DTES.	AGU.	
1	LO 814 / L 914/ L 1114	CR 1006	54	114	38 X 10	4 (FP)	
1	809 / 812 / 912	CR 1005	54	94	38 X 10	4 (FP)	
2	312/ 321/ 1111			101,64	41 X 14	6	
2	1114/ 1313/ 1513/ 1316/ 2013/ 1516			112	41 X 14	8	
2	L/ LK/ LS 1519/ 2219			130	55 X 26	8	
1	1218/ 1418/ 1618/ 1718/ 1620/ 1720	CR 1007	63,5	122	45 X 34	4 (RM)	
2	L 608 D			112	41 X 14	6	

FIG. 2



FORD							
FIG.	APLICACIÓN	CRUCETA	A	B	CxN°DTES.	AGU.	
1	F11000/F12000/F13000/F19000/	CR 1005	54	94	38 X 10	4 (FP)	

BRIDAS SALIDA DE CAJA

FIG.	APLICACIÓN	CRUCETA	A	B	CxN°DTES.	AGU.	
MERCEDES BENZ							
3	O364/ O 355/ O-326			130	46 X 16	8	
1	1218/ 1418/ 1618/ 1718/ 2318	CR 1007	63,5	122	46 X 16	4 (RM)	
1	L1218/ 1418/ 1618/ 1620 (96...)	CR 1017	59	115	50 X 24	4 (RM)	
3	L/ LK/ LS 1519/ 2219			130	65 X 8	8	

FIG. 1

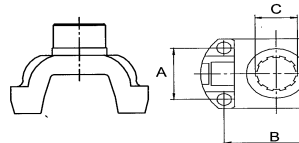
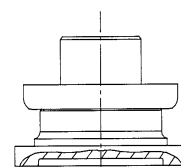


FIG. 3



SCANIA							
FIG.	APLICACIÓN	CRUCETA	A	B	CxN°DTES.	AGU.	
1	B/L/LS 111 - T-60 R/T-112 T 60	CR 1401	62	126	55 X 22	4 (RM)	
1	113H /P-R-T- 114/ 124 P400	CR 1010	84	132	59.3 X 24	4 (RM)	

BRIDA SALIDA PIÑÓN

FIG.	APLICACIÓN	CRUCETA	A	B	CxN°DTES.	AGU.	
MERCEDES BENZ							
3	ALTA 1114 - 1518 - OH 1315 (360.350.0045)			112	55 X 26	8	
3	L/ LS/ LK 1519/2219			130	55 X 26	8	
3	710 / 814/ OHL 1420 (380.350.0645)			130	55 X 26	8	
1	1218 1418 (384.353.7045)	CR 1007	63	122	55 X 26	4 (RM)	
	1114					8	
1	LK 1418/ 1620 (384.353.7145)	CR 1017	59	115	55 X 26	4 (RM)	

FIG. 1

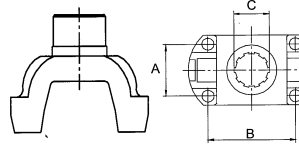
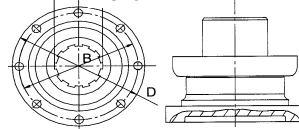


FIG. 3



HORQUILLAS DE EMBRAGUE

FIG.	APLICACIÓN	N° ORIGINAL
MERCEDES BENZ		
1	1111/ 1114/LPO	327.250.1213
1	1114 / L-608D ORIGINAL	352.250.0113
1	OH 1315 ORIGINAL	381.254.0208
2	1111/O-355/O-364 / 1114 REFORMA	
2	1315/ 1513/ 2013/L-608	
	1114 COMPLETA REFORMA	
	REFORMA OH	

FIG. 1

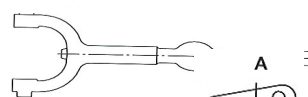
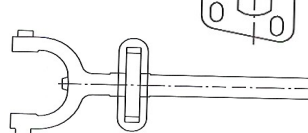


FIG. 2



CARDAN

N° ORIGINAL	DESCRIPCIÓN	PRECIO
345 410 8302 (1)	PLATO DE 8 AGUJEROS Cx cm P/1521 1730 cm (largo de caño)	
384 410 1102 (2)	PLATO DE 8 AGUJEROS P/ OH 940 cm (largo de caño)	

